



NCCPA Tutorial Readme File

Welcome

Welcome to the NCCPA Tutorial. The Tutorial will show you the software that will administer your exam. Samples show a variety of question types, one or more of which will be used in your exam. This document explains how to install and run the NCCPA Tutorial.

Minimum System Requirements

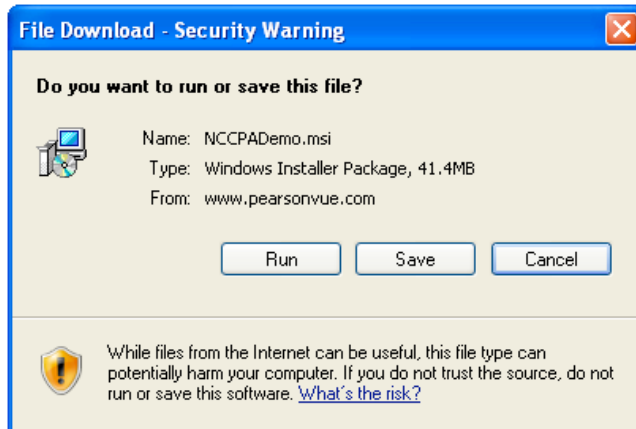
Before installing the NCCPA Tutorial, make sure your computer meets the system requirements listed below. The software is not designed to install and run properly on systems that do not meet these requirements.

- Pentium III PC or compatible, 1 GHz (Pentium 4, 2 GHz recommended). Macintosh computers are not supported.
- 512 MB of RAM
- 60 MB of empty hard disk space
- Microsoft Windows XP or 2000 (home or professional version), English edition. The content appears only in English.
- Microsoft Internet Explorer 5 or higher
- Super VGA (800 x 600) or higher resolution monitor (1024 x 768 recommended), with high color (16 bit)
- Microsoft compatible mouse or pointing device
- Internet access is not required when viewing the tutorial or demonstration tests.

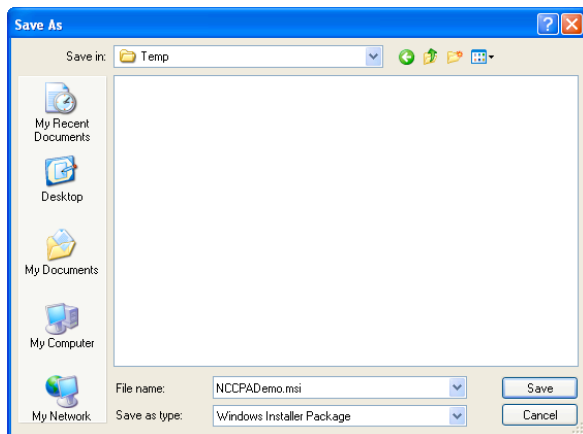
Install the NCCPA Tutorial

The installation process is quick and easy. Just follow the instructions on the computer screen. The process is also outlined for you here.

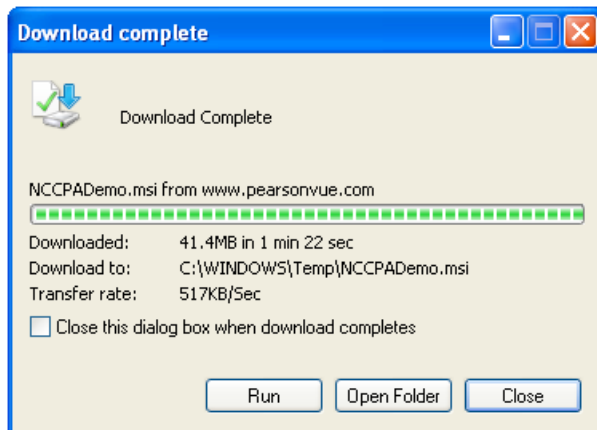
1. Click the **Download NCCPA Tutorial** link.
2. Click the **Save** button when the **File Download** window displays.



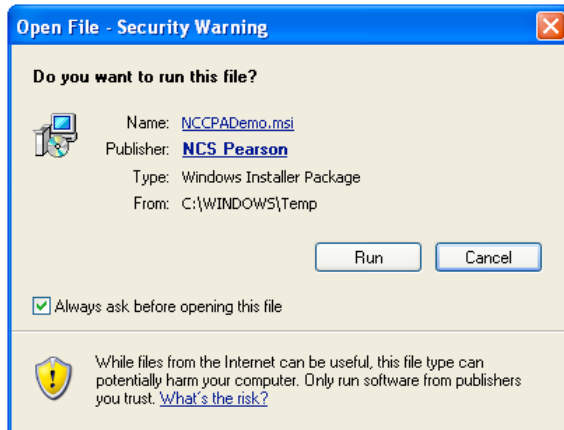
3. The **Save As** window displays. Navigate to the **Temp** directory and click the **Save** button.



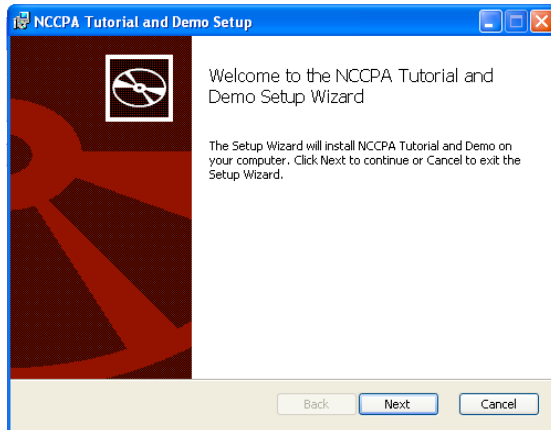
4. When the file finishes downloading, the **Download complete** window displays. Click the **Open Folder** button.



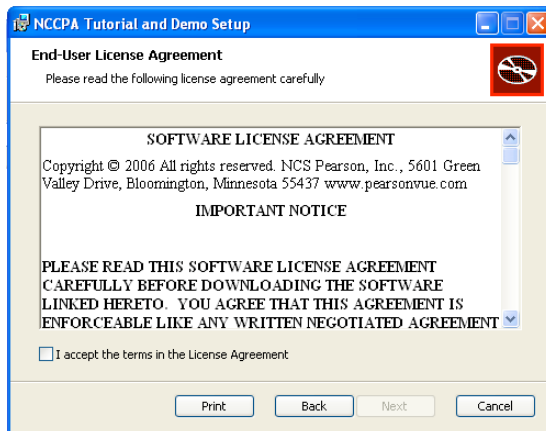
5. Double-click the **NCCPADemo.msi** file.
The **Security Warning** screen displays.



6. Click **Run**.
7. The **Install Shield Welcome** screen displays. Click **Next**.

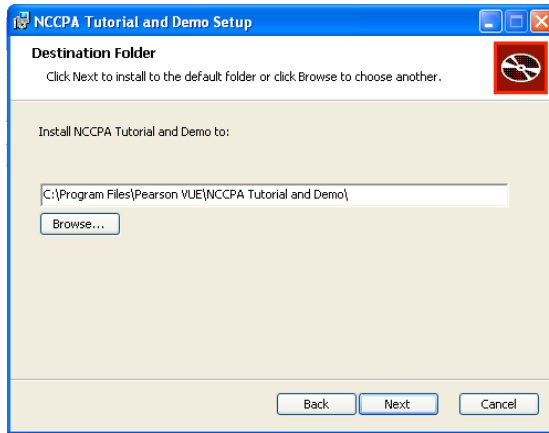


8. The **License Agreement** screen displays. Read the agreement. You can read the agreement on your screen or click **Print** to print a copy.

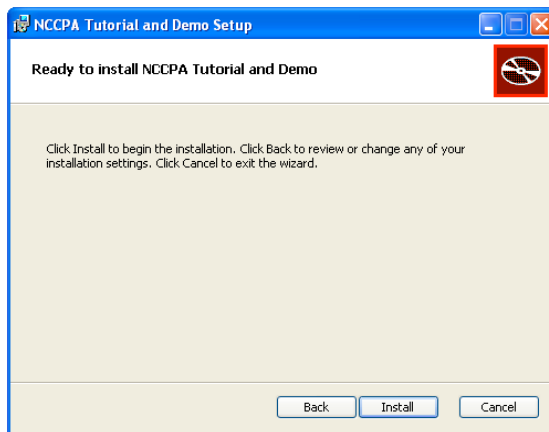


9. If you agree to the terms, select **I accept the terms of the License Agreement** and click **Next**.
(If you do not agree to the terms, click **Cancel** and the NCCPA Tutorial will not load.)

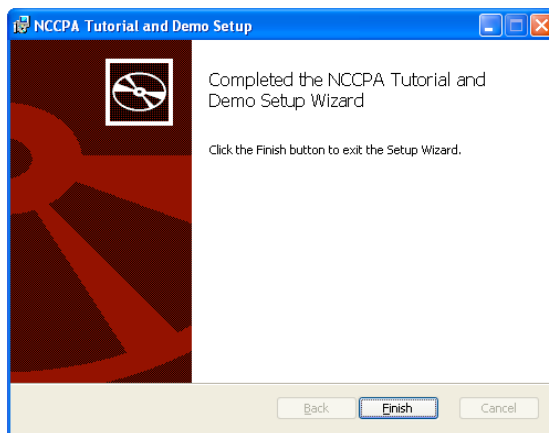
10. The **Destination Folder** screen displays. We recommend that you keep the default location for the tutorial. Click **Next**.



11. The **Ready to install** screen displays. Click **Install**.



12. The tutorial installation completes. Click **Finish**. The installation program ends.



The Tutorial install created a shortcut on your desktop and a shortcut in the Windows Start menu.

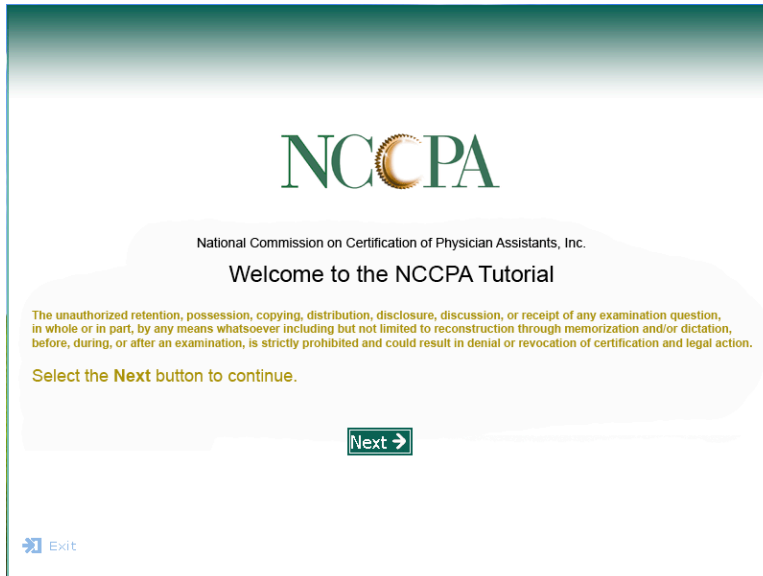
Run the NCCPA Tutorial

To run the tutorial software manually, do one of the following:

- Click the Windows **Start** button and select **All Programs | Pearson VUE | NCCPA Tutorial**.
- Double-click the **NCCPA Tutorial** icon on your computer's desktop.

Run Tutorial

1. To run the NCCPA Tutorial, hit the Next button on the welcome screen.



Exit the NCCPA Tutorial Software

1. To close the entire tutorial application, click the **Exit** button in the lower left corner of the main menu.
2. Click **Yes** to exit the tutorial and practice exam.

