

GED Only Technical Requirements



Warning

This document is designed for test centers that will deliver GED exams exclusively. If the test center will deliver exams for other clients, they should follow the guidelines in the [PVTCT Technical Requirements](#).

About the installation scenarios

This document describes the minimum hardware requirements to install the Pearson VUE Testing System (VTS) software in a Pearson VUE Authorized Test Center certified to deliver the GED program. The VTS software may be installed in one of two configurations: **Workgroup scenario** or **Server scenario**. Whichever scenario is installed, the hardware and software must meet Pearson VUE's minimum requirements as shown in the [System requirements](#) on page 6.



Warning

If your site is installing in a **Workgroup scenario** you are limited to no more than 15 exam delivery workstations. If you are installing on more than 15 exam delivery workstations you must use a **Server scenario**, which requires a **Windows server OS**.

The following items are strictly prohibited:

- **Mac** hardware running any operating system.
- **Virtual environments** in any form
- **Laptops as exam delivery** workstations or as **Servers**

Laptops may only be used for exam delivery machines if the test center delivers GED exams exclusively. If exams for other clients will be delivered, then standard desktop workstations must be installed.

Any Windows user account that interacts with the VTS software on the **Server, Administration, Proctor, or exam delivery workstation** is **required** to have **local administrator rights** on that workstation. This includes both installing and running the VTS software.

Workgroup scenario installation – desktop

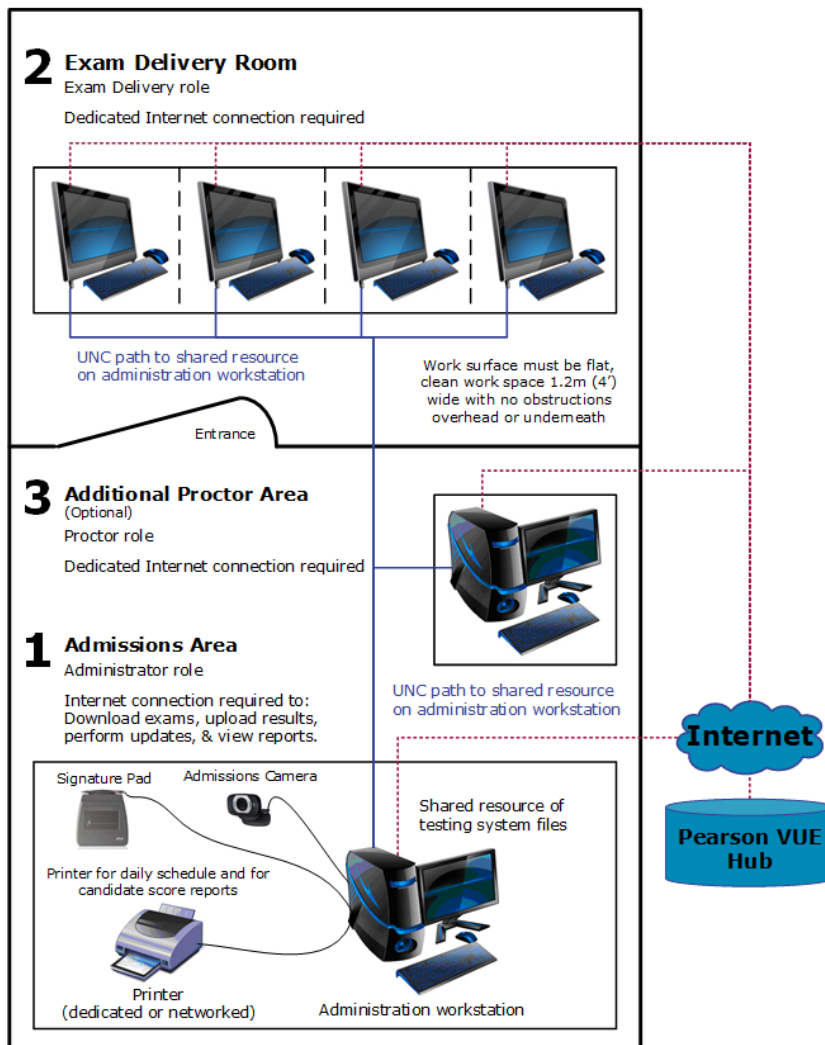
In a Workgroup scenario installation, exam delivery workstations are connected through a local area network (LAN) or workgroup to the Administration workstation which provides shared file storage. This is illustrated below.



Warning

A Workgroup scenario may only use up to 15 exam delivery workstations. If you will be installing more than 15 workstations, you must use a Server scenario shown on the following page.

Pearson VUE Authorized Center
Workgroup Scenario
Multiple computers workgroup/network



Workgroup scenario installation – laptop

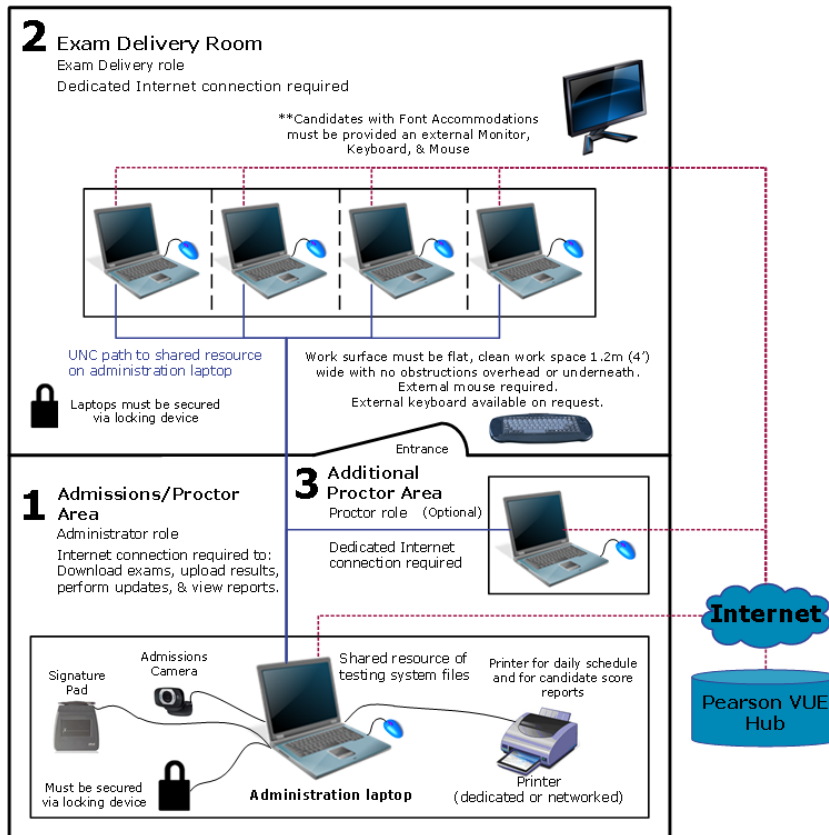
In a Workgroup scenario installation, exam delivery laptops are connected through a local area network (LAN) or workgroup to the Administration laptop which provides shared file storage. This is illustrated below.



Warning

A Workgroup scenario may only use up to 15 exam delivery laptops. If you will be installing more than 15 laptops, you must use a Server scenario shown on the following page.

Pearson VUE Authorized Center – Mobile Laptop Lab
 Workgroup Scenario
 Multiple computers workgroup/network



Warning

Laptops may only be used as exam delivery, administration, and proctor machines. **Laptop Servers are strictly prohibited.**

Server scenario Installation – desktop

In a Server scenario installation, all exam delivery workstations are connected through a LAN, and a file server provides shared file storage. This is illustrated below. (Server scenario refers to a setup type and is not related to an Operating System.)

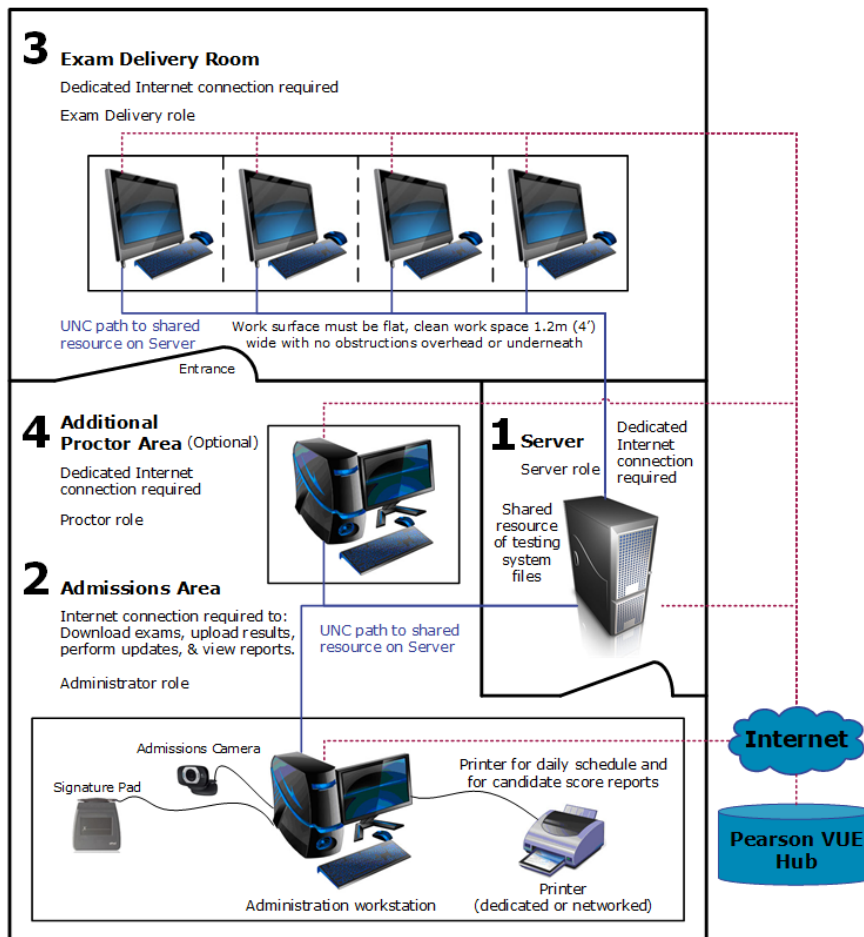


Warning

You must use a **Server scenario** if you have more than **15 exam delivery workstations**. A server operating system, such as Server 2022, 2019 or 2016, is required for more than 15 exam delivery workstations.

Pearson VUE Authorized Center

Server Scenario
Multiple computers
local area network (LAN)



Server scenario Installation – laptop

Laptops may be used in a Server scenario if you connect to a desktop server. Laptops may only be used as exam delivery, Administration and Proctor machines. Laptop Servers are strictly prohibited.

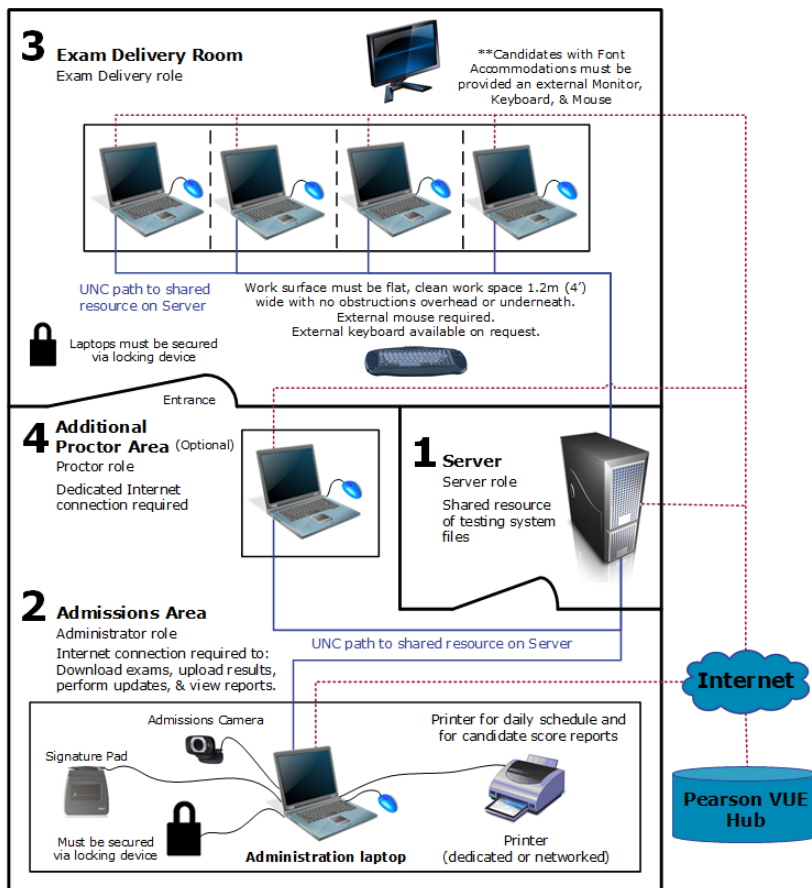


Warning

You must use a **Server scenario** if you have more than **15 exam delivery laptops**. A server operating system, such as Server 2022, 2019 or 2016, is required for more than 15 exam delivery laptops.

Pearson VUE Authorized Center – Laptop Lab

Server Scenario
Multiple computers
local area network (LAN)



Warning

If laptops are used in a mobile lab scenario, the server may reside in the same room as the administration/proctor laptops if candidates do not have direct access to the server. If laptops are used in a fixed test center, the server should reside in a separate room.

GED PVTC Technical Requirements

System requirements

Effective **February 1, 2025**, the following pages list the minimum system requirements for installing and running the Pearson VUE Testing System, and for operating as a test center. **Pearson recommends purchasing equipment that meets or exceeds the Recommended Specifications.** The minimum requirements will change periodically based on the needs of our exam sponsors.

Hardware configuration

All-in-one PC's are permitted if they meet the minimum Technical Specification and the Touch screen is disabled. Pearson VUE highly recommends that All-in-one PC's meet the Recommended Technical Specifications.

Software licenses

All test centers must have Windows operating systems that have completed online activation. Application software installed on all exam delivery workstations must also have current licensing. Windows Operating Systems must pass Genuine Windows Validation. Evaluation copies are not supported.

Network configuration

Pearson VUE **strongly recommends** that all machines with VTS Software installed remain in the same domain or workgroup, VLAN, and subnet. Network configurations that do not follow this guideline may experience decreased exam delivery performance. You may be asked to make changes to your network configuration to comply with these guidelines as part of problem resolution.

The following ports/URLs are also required to be open for the software to function properly:

80, TCP - HTTP
443, TCP - HTTPS

If your test center uses a firewall or web filter, please ensure that the following URL's and IP Ranges are on the allowlist to ensure that you can connect to Pearson VUE.

- Unrestricted access to **http://*.pearsonvue.com** and **https://*.pearsonvue.com**
- IP range 13.89.111.144/28 (13.89.111.144 - 13.89.111.159) / ports 80 and 443
- IP range 52.177.91.16/28 (52.177.91.16 - 52.177.91.31) / ports 80 and 443

Internet bandwidth

The minimum connection speed (Base Network) requirement of 5.0 Mbps down/ 3.0 Mbps up is required for all test centers. Some exam deliveries will require an internet connection. For Internet Based Tests (IBT), internet requirements depend on the number of delivery workstations. See the table below for details.

Base network bandwidth + 256 Kbps for each exam delivery workstation/laptop

1 – 15 delivery workstations

5.0 Mbps down/ 3.0 Mbps up base and **512 Kbps** for each workstation.

16 – 50 delivery workstations

10.0 Mbps down / 5.0 Mbps up base and **512 Kbps** for each workstation.

51 – 100 delivery workstations

20.0 Mbps down / 10.0 Mbps up base and **512 Kbps** for each workstation.

All workstations

For IBT exam deliveries, latency should not exceed **150 ms**.

Monitors – exam delivery

All test centers are required to use monitors that meet the following criteria.

Monitor

- **15.6-inch** or larger for laptops – external monitors **24-inch**
- Must allow for the following display resolution settings and be set to the highest resolution:
 - **1920 x 1080 (set to this resolution)**
 - **1280 x 1024**
 - **1024 x 768**
- Monitor must be connected to the computer using **DVI**, **DisplayPort**, or **HDMI**

Desktop graphics adapter

- Exam delivery workstations must have a graphics adapter that supports **GPU Scaling** (ability to Maintain Aspect Ratio).
- Exam delivery workstations must have the GPU Scaling feature enabled in the graphics adapter software.
- The latest version of graphics drivers must be installed.

Pearson VUE specific hardware

Some exams may require test center admissions equipment. Please consult with your Pearson VUE representative to determine if these components are required for your test center. If required, these components may be purchased from Pearson VUE or a third-party source.

Web camera

Logitech HD Webcam C615, or
Logitech Pro C920 Pro HD Webcam, or
Logitech C920e Business Webcam

Signature device

ePadLink: ePad Signature Pad – Model VP9801 or
ePadLink: ePad II Signature Pad – Model VP9851



Warning

Pearson VUE strongly recommends purchasing 2 web cameras. If the first camera breaks down, you will not be able to deliver any more exams until a replacement is in place.

External peripherals for laptops

External mouse

Because many candidates are not comfortable using a touchpad mouse, this could negatively affect the results of their exam. Therefore, an **external mouse is required for every exam delivery laptop.**

External keyboard

Some candidates are not comfortable typing on a laptop keyboard, and this could negatively affect the results of their exam. Therefore, **external keyboards must be available to candidates if they request one.**



Note

If a candidate is configured with Font Accommodations, they must automatically be provided with an external keyboard.

External monitor

Candidates configured with **Font Accommodations must automatically be provided with an external monitor, keyboard, and mouse.**

Server: file storage

The file storage server must be accessible to the Administration workstation, Proctor workstation, and all exam delivery workstations. These requirements apply to Administration workstations with 1 – 15 exam delivery workstations, and to Servers with 16 – 30 exam delivery workstations.

Operating System

All Servers must be Desktop machines.

Required for 1 – 15 exam delivery seats:

***Windows 10** Professional or Enterprise (**64-bit mandatory**)

***Windows 11** Professional or Enterprise 10th generation or higher (**64-bit mandatory**)

Windows Server 2022 (64-bit)

Windows Server 2019 (64-bit)

Windows Server 2016 (64-bit)

Required for 16 – 30 exam delivery seats:

Windows Server 2022 (64-bit)

Windows Server 2019 (64-bit)

Windows Server 2016 (64-bit)

(Windows Server Core is not currently supported)

*You must have the latest version of Windows 10 or 11 with all current patches installed. You should run monthly updates for any OS updates.

****Windows 10 support ends October 2025.**



Note:

If you are an educational facility, i.e., University, **Windows 10 education** is currently supported.

GED PVTC Technical Requirements

Processor

Required for 1 – 15 exam delivery seats:

Intel: **i5** Generation 4 or higher
i3 Generation 8 or higher

AMD: **Ryzen 3** Generation 5 or higher

Required for 16 – 30 exam delivery seats:

Intel: **i7** Generation 2 or higher

AMD: **Ryzen 5** or higher



Note:

CPU must have a minimum of two cores (dual-core).

*Please refer to the Microsoft website to ensure the i3/i5/i7 or Ryzen 3/5 processor is compatible with Windows 11.

RAM

Required for 1 – 15 exam delivery seats:

8 GB of RAM

Required for 16 – 30 exam delivery seats:

16 GB of RAM or more

Hard drive

SATA II Interface Standard or faster Interface Standard.

128 GB available disk space.

Network connection

Required for 1 – 15 exam delivery seats:

100 Mbps Full Duplex WIRED connection to the network switch.

Required for 16 – 30 exam delivery seats:

1 Gbps Full Duplex WIRED connection to the network switch.

Strongly recommended:

The server must be dedicated to the VTS software to ensure the highest quality experience for candidates during exam delivery.

Pearson VUE strongly discourages that the server provides additional services such as: domain controller, DHCP, SQL Server, WINS, etc.



Warning:

Wireless Networks are strictly prohibited. 3G/4G/5G connections are prohibited.

Power

UPS is recommended.

Internet connection

See [Internet bandwidth](#) requirements above.

Internet browser

Latest version of **Edge, Chrome,** or **Firefox.**

Additional software

- Server must have **Anti-Virus software** installed with a current update.
- **.NET 3.5** framework must be enabled.

Additional notes

- The Windows account used to **install** the VUE Testing System Platform must have **full local Administrative rights** to install properly.
- Candidates should never have free access to the Server machine at any time.

Administration and proctor – desktop

Operating System

***Windows 10** Professional or Enterprise (**64-bit mandatory**)

****Windows 11** Professional or Enterprise 10th generation or higher (**64-bit mandatory**)

*You must have the latest version of Windows 10 or 11 with all current patches installed. You should run monthly updates for any OS updates.

****Windows 10 support ends October 2025.**



Note:

If you are an educational facility, i.e., University, **Windows 10 education** is currently supported.

Processor

Minimum required:

Intel: **i5** Generation 4 or higher
i3 Generation 8 or higher

AMD: **Ryzen 3** Generation 5 or higher

Recommended specifications:

Intel: **i7** Generation 2 or higher

AMD: **Ryzen 5** or higher

*Please refer to the Microsoft website to ensure the i3/i5/i7 or Ryzen 3/5 processor is compatible with Windows 11.

RAM

Minimum required: **8 GB** of RAM

Recommended specification: **16 GB** of RAM or more

Hard drive

128 GB available disk space.

GED PVTC Technical Requirements

Graphics adapter

- Video Adapter must support **DirectX 12** or higher and **OpenGL 2.0** or higher. Latest drivers installed.
- The **WDDM Driver** version must be **2.0** or higher.
- **128 MB** of dedicated Video RAM or the ability to increase the dedicated video memory to 128 MB via bios change.



Note:

OpenGL 2.0 or higher is required regardless of whether it is an “integrated chipset” or a machine with a dedicated video card.

- All computers and monitors must be connected via **DVI**, **DisplayPort**, or **HDMI**.

Display

24-inch monitor.

Mouse and keyboard

- English QWERTY Keyboard
- 2 Button Wheel Mouse

USB ports

Minimum required:

4 available USB 2.0 ports for:

- English QWERTY Keyboard
- 2 Button Wheel Mouse
- Signature Pad admissions equipment
- Camera admissions equipment

Recommended specifications:

6 available USB 2.0 ports for:

- English QWERTY Keyboard
- 2 Button Wheel Mouse
- Signature Pad admissions equipment
- Camera admissions equipment
- 2 spare ports

GED PVTC Technical Requirements

Network connection

Minimum required:

100 Mbps Full Duplex WIRED connection to the network switch.

Recommended specification:

1 Gbps Full Duplex WIRED connection to the network switch.

Strongly Recommended:

All machines with VTS software installed should remain in the same domain or workgroup, VLAN, and subnet.



Warning:

Wireless Networks are strictly prohibited. 3G/4G/5G connections are prohibited.

Internet connection

See [Internet bandwidth](#) requirements above.

Internet browser

Latest version of **Edge, Chrome,** or **Firefox.**

Printer

600 DPI Laser Printer.

Additional software

- **.NET 4.0** is installed with the VTS software.
- If installing on **Windows 10**, **.NET 3.5** must be enabled on the Administration/Proctor workstation to complete the VTS installation.
- All workstations must have **Anti-Virus software** installed with a current update.

Additional notes

- **Windows 11 and 10** allows for up to **15** simultaneous exam deliveries.
- Candidates must not have free access to the Administration or Proctor workstations at any time.
- The Windows account used to **install** the VUE Testing System Platform must have **full local Administrative rights** to properly install and update the software.

Administration and proctor – laptop

Operating System

***Windows 10** Professional or Enterprise (**64-bit mandatory**)

****Windows 11** Professional or Enterprise 10th generation or higher (**64-bit mandatory**)

*You must have the latest version of Windows 10 or 11 with all current patches installed. You should run monthly updates for any OS updates.

****Windows 10 support ends October 2025.**



Note:

If you are an educational facility, i.e., University, **Windows 10 education** is currently supported.

GED PVTC Technical Requirements

Processor

Minimum required:

Intel: **i5** Generation 4 or higher
i3 Generation 8 or higher

AMD: **Ryzen 3** Generation 5 or higher

Recommended specifications:

Intel: **i7** Generation 2 or higher

AMD: **Ryzen 5** or higher

*Please refer to the Microsoft website to ensure the i3/i5/i7 or Ryzen 3/5 processor is compatible with Windows 11.

RAM

Minimum required: **8 GB** of RAM

Recommended specification: **16 GB** of RAM or more

Hard drive

128 GB available disk space.

Solid-State Disk (SDD)

Graphics adapter

- Video Adapter must support **DirectX 12** or higher and **OpenGL 2.0** or higher. Latest drivers installed.
- The **WDDM Driver** version must be **2.0** or higher.
- **128 MB** of dedicated Video RAM or the ability to increase the dedicated video memory to 128 MB via bios change.



Note:

OpenGL 2.0 or higher is required regardless of whether it is an “integrated chipset” or a machine with a dedicated video card.

- All computers and monitors must be connected via **DVI**, **DisplayPort**, or **HDMI**.

Display

24-inch external monitor.

Mouse and keyboard

Minimum required:

- Built in English QWERTY Keyboard
- Built in Touch Pad Mouse

Recommended specifications:

- External English QWERTY Keyboard
- External 2 Button Wheel Mouse

GED PVTC Technical Requirements

USB ports

Minimum required:

2 available USB 2.0 ports for:

- Signature Pad admissions equipment
- Camera admissions equipment

Recommended specifications:

4 available USB 2.0 ports for:

- External English QWERTY Keyboard
- External 2 Button Wheel Mouse
- Signature Pad admissions equipment
- Camera admissions equipment

Network connection

Minimum required:

100 Mbps Full Duplex WIRED connection to the network switch.

Recommended specification:

1 Gbps Full Duplex WIRED connection to the network switch.

Strongly Recommended:

All machines with VTS software installed should remain in the same domain or workgroup, VLAN, and subnet.



Warning:

Wireless Networks are strictly prohibited. 3G/4G/5G connections are prohibited.

Internet connection

See [Internet bandwidth](#) requirements above.

Internet browser

Latest version of **Edge, Chrome, or Firefox.**

Printer

600 DPI Laser Printer.

Additional software

- **.NET 4.0** is installed with the VTS software.
- If installing on **Windows 10**, **.NET 3.5** must be enabled on the Administration/Proctor workstation to complete the VTS installation.
- All workstations must have **Anti-Virus software** installed with a current update.

Additional notes

- The Administration laptop must always be physically secured via **Cable Lock** or another locking device.
- The Test Administrator should be the only one that can remove the locking device from the Administration laptop.
- Candidates must not have free access to the Administration or Proctor workstations at any time.
- **Windows 11 and 10** allows for up to **15** simultaneous exam deliveries.
- The Windows account used to **install** the VUE Testing System Platform must have **full local Administrative rights** to properly install and update the software.

Exam delivery – desktop

Operating System

***Windows 10** Professional or Enterprise (**64-bit mandatory**)

****Windows 11** Professional or Enterprise 10th generation or higher (**64-bit mandatory**)

*You must have the latest version of Windows 10 or 11 with all current patches installed. You should run monthly updates for any OS updates.

****Windows 10 support ends October 2025.**



Note:

If you are an educational facility, i.e., University, **Windows 10 education** is currently supported.

Processor

Minimum required:

Intel: **i5** Generation 4 or higher
i3 Generation 8 or higher

AMD: **Ryzen 3** Generation 5 or higher

Recommended specifications:

Intel: **i7** Generation 2 or higher

AMD: **Ryzen 5** or higher

*Please refer to the Microsoft website to ensure the i3/i5/i7 or Ryzen 3/5 processor is compatible with Windows 11.

RAM

Minimum required: **8 GB** of RAM

Recommended specification: **16 GB** of RAM or more

Hard drive

128 GB available disk space.

Graphics adapter

- Video Adapter must support **DirectX 12** or higher and **OpenGL 2.0** or higher. Latest drivers installed.
- The **WDDM Driver** version must be **2.0** or higher.
- **128 MB** of dedicated Video RAM or the ability to increase the dedicated video memory to 128 MB via bios change.



Note:

OpenGL 2.0 or higher is required regardless of whether it is an “integrated chipset” or a machine with a dedicated video card.

- All exam delivery workstations must have a **Graphics Adapter** that supports **GPU Scaling** (sometimes called Maintaining Aspect Ratio).
- All exam delivery workstations **must have the GPU Scaling feature enabled**.
- **All computers and monitors** must be connected via **DVI, DisplayPort, or HDMI**.

Display

See [Monitors – exam delivery](#) requirements above.

Audio

Windows compatible audio playback capability.

GED PVTC Technical Requirements

Mouse and keyboard

- English QWERTY Keyboard
- 2 Button Wheel Mouse

USB ports

Minimum required:

2 available USB 2.0 ports for:

- English QWERTY Keyboard
- 2 Button Wheel Mouse

Recommended specifications:

4 available USB 2.0 ports for:

- English QWERTY Keyboard
- 2 Button Wheel Mouse
- 2 spare ports

Network connection

Minimum required:

100 Mbps Full Duplex WIRED connection to the network switch.

Recommended specification:

1 Gbps Full Duplex WIRED connection to the network switch.

Strongly Recommended:

All machines with VTS software installed should remain in the same domain or workgroup, VLAN, and subnet.



Warning:

Wireless Networks are strictly prohibited. 3G/4G/5G connections are prohibited.

Internet connection

See [Internet bandwidth](#) requirements above.

Internet browser

Latest version of **Edge, Chrome, or Firefox.**

Printer

600 DPI Laser Printer.

Additional software

- **.NET 4.0** is installed with the VTS software.
- If installing on **Windows 10**, **.NET 3.5** must be enabled on the Administration/Proctor workstation to complete the VTS installation.
- All workstations must have **Anti-Virus software** installed with a current update.

Additional notes

- The Windows account used to **install** the VUE Testing System Platform must have **Administrative rights** to install properly.
- The Windows account profile logged into the **exam delivery workstation** must have **full local Administrative rights** to launch the Delivery Manager software.
- If there is an approved accommodation for **Assistive Technology** (such as **JAWS** software) the exam delivery workstation requires more advanced technical requirements, such as **16 GBs of RAM**. A Pearson representative will confirm with test center staff prior to scheduling this type of Assistive Technology.

Exam delivery – laptop

Operating System

***Windows 10** Professional or Enterprise (**64-bit mandatory**)

****Windows 11** Professional or Enterprise 10th generation or higher (**64-bit mandatory**)

*You must have the latest version of Windows 10 or 11 with all current patches installed. You should run monthly updates for any OS updates.

****Windows 10 support ends October 2025.**



Note:

If you are an educational facility, i.e., University, **Windows 10 education** is currently supported.

Processor

Minimum required:

Intel: **i5** Generation 4 or higher
i3 Generation 8 or higher

AMD: **Ryzen 3** Generation 5 or higher

Recommended specifications:

Intel: **i7** Generation 2 or higher

AMD: **Ryzen 5** or higher

*Please refer to the Microsoft website to ensure the i3/i5/i7 or Ryzen 3/5 processor is compatible with Windows 11.

RAM

Minimum required: **8 GB** of RAM

Recommended specification: **16 GB** of RAM or more

Hard drive

128 GB available disk space.

7200 rpm HDD or Solid-State Drives (SDD) preferred.

Graphics adapter

- Video Adapter must support **DirectX 12** or higher and **OpenGL 2.0** or higher. Latest drivers installed.
- The **WDDM Driver** version must be **2.0** or higher.
- **128 MB** of dedicated Video RAM or the ability to increase the dedicated video memory to 128 MB via bios change.



Note:

OpenGL 2.0 or higher is required regardless of whether it is an “integrated chipset” or a machine with a dedicated video card.

- **All computers and monitors** must be connected via **DVI, DisplayPort, or HDMI.**

Widescreen Laptops:

- Must have a Graphics Adapter that supports GPU Scaling (sometimes called Maintaining Aspect Ratio).
- Must have the GPU Scaling feature enabled.

Display

See [Monitors – exam delivery](#) requirements above.



Note:

- **External 24-inch monitor** or larger for candidates with Font Accommodations
- **24-inch external monitor recommended**

GED PVTC Technical Requirements

Audio

Windows compatible audio playback capability.

Mouse and keyboard

Minimum required:

- Built in English QWERTY Keyboard
- External 2 Button Wheel Mouse

Recommended specifications:

- External English QWERTY Keyboard
- External 2 Button Wheel Mouse



Note:

- An external keyboard is required for candidates with Font Accommodations.
- Sites must provide an external keyboard if candidate requests one.

USB ports

Minimum required:

2 available USB 2.0 ports for:

- External English QWERTY Keyboard (if requested or required by candidate)
- External 2 Button Wheel Mouse

Recommended specifications:

3 available USB 2.0 ports for:

- External English QWERTY Keyboard
- External 2 Button Wheel Mouse
- 1 spare port

Network connection

Minimum required:

100 Mbps Full Duplex WIRED connection to the network switch.

Recommended specification:

1 Gbps Full Duplex WIRED connection to the network switch.

Strongly Recommended:

All machines with VTS software installed should remain in the same domain or workgroup, VLAN, and subnet.



Warning:

Wireless Networks are strictly prohibited. 3G/4G/5G connections are prohibited.

Internet connection

See [Internet bandwidth](#) requirements above.

Internet browser

Latest version of **Edge, Chrome,** or **Firefox.**

Printer

600 DPI Laser Printer.

Additional software

- **.NET 4.0** is installed with the VTS software.
- If installing on **Windows 10**, **.NET 3.5** must be enabled on the Administration/Proctor workstation to complete the VTS installation.
- All workstations must have **Anti-Virus software** installed with a current update.

Additional notes

- Exam delivery laptops **MUST NOT be** moved or **mobile** during exam delivery – **a locking device** may be necessary to prevent laptops from walking away.
- An external Monitor, Keyboard, and Mouse are required for candidates with Font Accommodations.
- The Windows account used to **install** the VUE Testing System Platform must have **Administrative rights** to install properly.
- The Windows account profile logged into the **exam delivery laptop** must have **full local Administrative rights** to launch the Delivery Manager software.
- If there is an approved accommodation for **Assistive Technology** (such as **JAWS** software) the exam delivery workstation requires more advanced technical requirements, such as **16 GBs of RAM**. A Pearson representative will confirm with test center staff prior to scheduling this type of Assistive Technology.

Prohibited on all workstations and servers

All server, administration, and exam delivery workstations must adhere to the following restrictions:

Portable computing devices

Smartphones are strictly prohibited.

Tablet devices are strictly prohibited (e.g., **iOS**, **Android**, and **Windows 8**).

Netbooks and **Chromebooks** are strictly prohibited.



Warning:

Laptops are strictly prohibited as exam delivery workstations or as Servers.

Processor

Devices running Ultra Mobile Processors are strictly prohibited. This includes but is not limited to **Intel Atom**, **AMD NEO CPU** lines, and **ARM** CPUs.

RAM

Less than **8 GB** on any workstation.

Hard drive

FAT32 File System.

Operating system

- **Evaluation versions** of operating systems are not allowed.
- **Windows 8.1, 8, 7, XP & Vista** are strictly prohibited.
- **Windows Server 2012** and **2008** (all versions).
- **Windows Server Operating System** strictly prohibited on the exam delivery workstations and not supported on Administration workstations.
- **Virtual environments** are strictly prohibited (e.g., VMWare, Virtual PC, Citrix, Parallels, VirtualBox, etc.)
- **Mac OSX** is strictly prohibited.
- **Mac hardware** running any Operating System is strictly prohibited.
- **All Linux/Unix** based Operating Systems are strictly prohibited.

Graphics adapter

Any Graphics Adapter that does not support **DirectX 12** or later with **WDDM 2.0 driver** or higher.

Monitor display

- **Monitors smaller than 24"** are strictly prohibited on exam delivery workstations.
- **Dual monitors** are strictly prohibited on exam delivery workstations.
- **KVM switches** are strictly prohibited on exam delivery workstations.
- **Touch Screen monitors** must be disabled on all workstations.

USB

Portable computing devices such as, but not limited to, smartphones and tablets are strictly prohibited from being connected to the exam delivery workstation during exam deliveries.

USB Hubs are strictly prohibited on exam delivery workstations.

Network

Wireless Networks of any kind are strictly prohibited.

IPv6 is not currently supported.

Novell Netware is not supported.

Network Hubs are strictly prohibited.

Internet connection

SSL VPNs are strictly prohibited. (e.g., Hotspot Shield).

Additional software

Software that can be used to remotely access the delivery workstations during exam delivery is strictly prohibited.

Additional notes

It is strictly prohibited to install the VUE Testing System Platform on any computer that does not have Anti-Virus software installed on it.

Prohibited on laptops

All administration, and exam delivery laptops must adhere to the following restrictions:

Portable computing devices

Smartphones are strictly prohibited.

Tablet devices are strictly prohibited (e.g., **iOS**, **Android**, and **Windows 8**).

Netbooks and **Chromebooks** are strictly prohibited.



Warning:

- **Delivery Laptops** are strictly prohibited as Servers.
- **Delivery Laptops** with a “Tablet” mode are strictly prohibited from delivering exams while in Tablet mode.

Processor

Devices running Ultra Mobile Processors are strictly prohibited. This includes but is not limited to **Intel Atom**, **AMD NEO CPU** lines, and **ARM** CPUs.

RAM

Less than **4 GB** on any workstation.

Hard drive

FAT32 File System

Hard drives that spin at less than **5400 rpms** (SSD are exempt).

Operating system

- **Evaluation versions** of operating systems are not allowed.
- **Windows 8.1, 8, 7, XP & Vista** are strictly prohibited.
- **Windows Server 2012** and **2008** (all versions).
- **Windows Server Operating System** strictly prohibited on the exam delivery laptops and not supported on Administration laptops.
- **Virtual environments** are strictly prohibited (e.g., VMWare, Virtual PC, Citrix, Parallels, VirtualBox, etc.)
- **Mac OSX** is strictly prohibited.
- **Mac hardware** running any Operating System is strictly prohibited.
- **All Linux/Unix** based Operating Systems are strictly prohibited.

Graphics adapter

Any Graphics Adapter that does not support **DirectX 12** or later with **WDDM 2.0 driver** or higher.

Monitor display

External monitors smaller than 24" are strictly.

Touch Screen monitors must be disabled on all workstations.

Exam Delivery Laptops:

- **Dual monitors** are strictly prohibited.
- **Laptops:** Any 16:9 aspect ratio display smaller than 15.6".

GED PVTC Technical Requirements

USB

Portable computing devices such as, but not limited to, smartphones and tablets are strictly prohibited from being connected to the exam delivery laptops during exam deliveries.

Exam Delivery Laptops:

USB Hubs are strictly prohibited on exam delivery laptops.

Network

Wireless Networks of any kind are strictly prohibited.

IPv6 is not currently supported.

Novell Netware is not supported.

Network Hubs are strictly prohibited.

Internet connection

SSL VPNs are strictly prohibited. (e.g., Hotspot Shield).

Additional software

Software that can be used to remotely access the delivery laptops during exam delivery is strictly prohibited.

Additional notes

It is strictly prohibited to install the VUE Testing System Platform on any computer that does not have Anti-Virus software installed on it.